

Abgen



# KL Series LED Display

SHINNING STAR, CONSTANT QUALITY

One-Stop Service, Multiple Solution

## KL Commercial Display

One-Stop Service,  
Multiple Solution



One-stop Service,  
Multiple Solution



Shinning Price, Constant Quality  
(Standard of Quality Control,  
Mature of Price System)

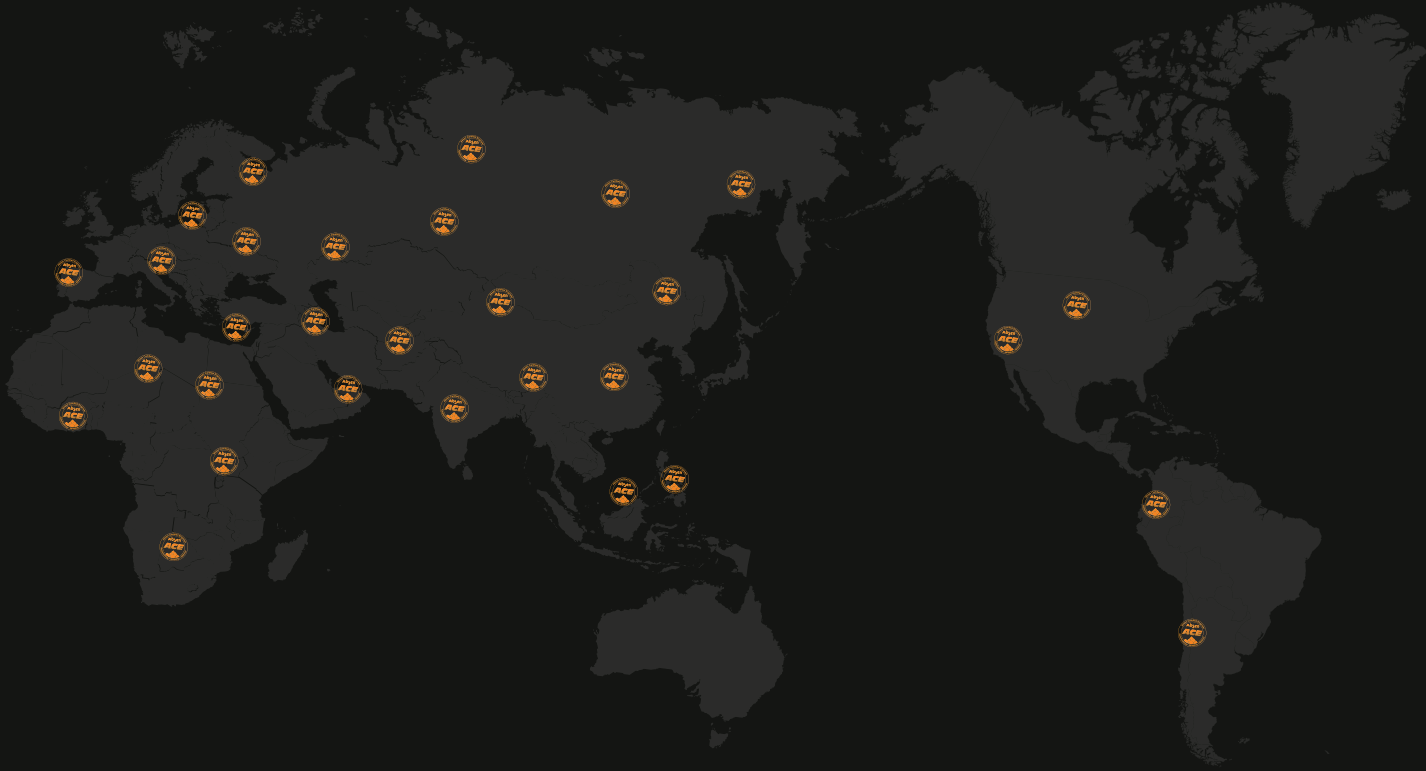


Create a Better Visual Experience  
(Fine LED Pixel)

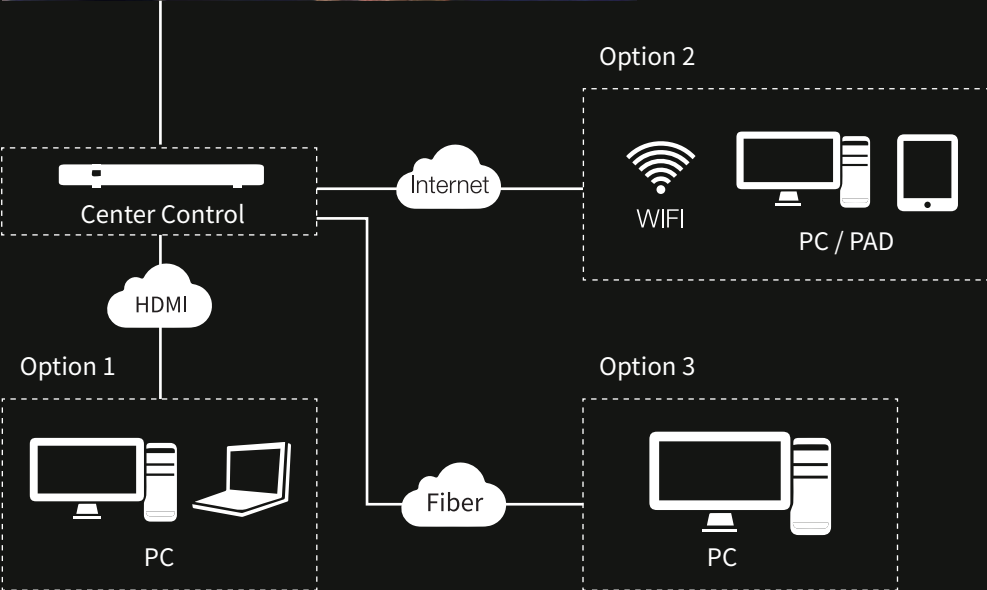
One-Stop Service, Multiple Solution 

## Developed Customer Service Systems

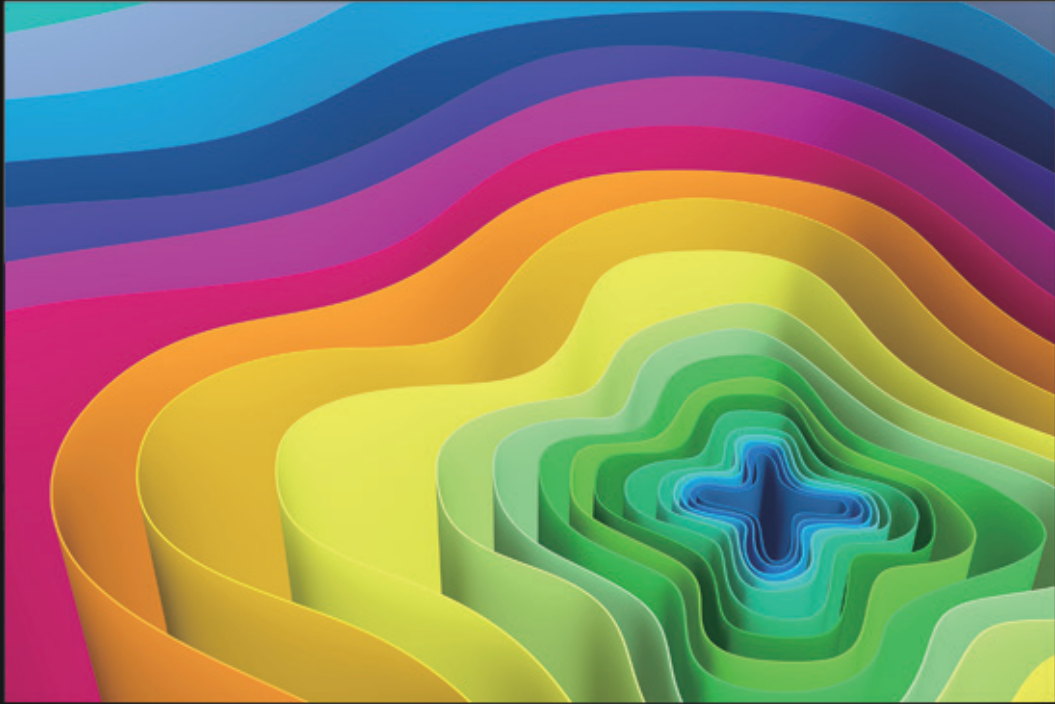
Industry-first ACE training program  
+1,400 ACE engineers worldwide.

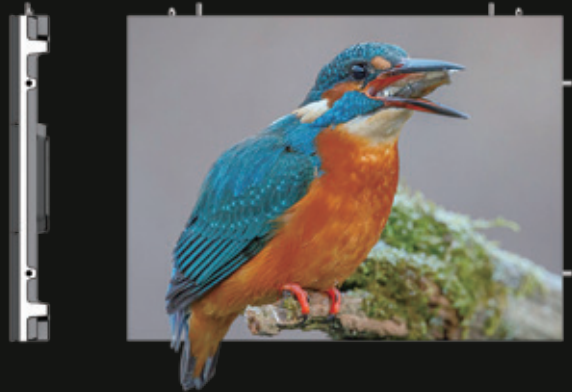
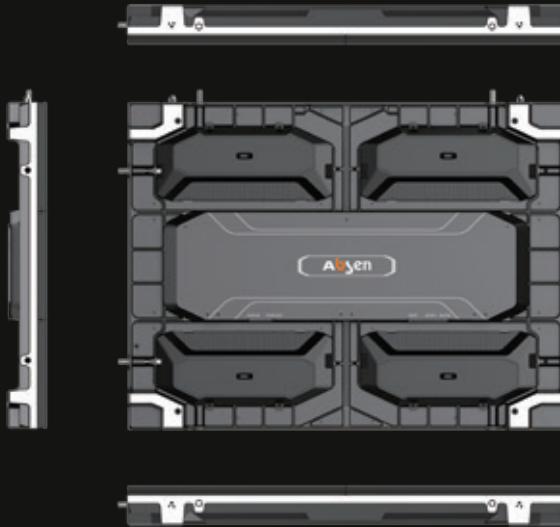


# One-Stop Service, Multiple Solution



Create a Better Visual Experience  Fine Pixel LED, P3/2.5/2





## KL Commercial Display KL2/KL2.5/KL3

Cabinet Dimension  $60 \times 480 \times 640\text{mm}$   
Weight 7.8KG

Fine LED Pixel  
Create a Better Visual Experience

- High precision die casting aluminum alloy housing
- Lightweight design,
- Higher Accuracy and Reliability





# Front & Rear Installation and Maintenance



Module/power components go through the cabinet for front & rear install

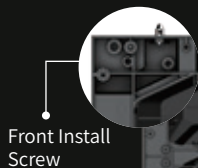


Magnet

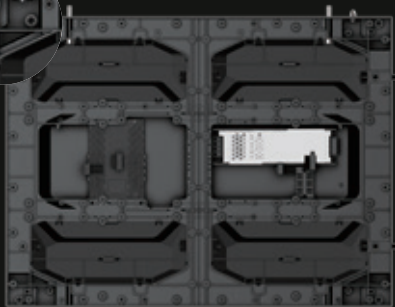
Magnetic Module 320X160mm  
Lamp plate screwed to the sump



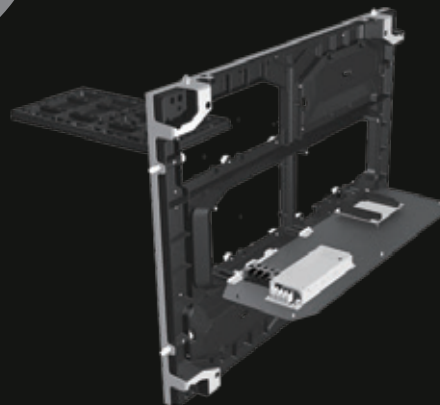
Hinge design



Front Install Screw



Remove the module, maintenance through the middle for the power, receiving card and the wire terminal



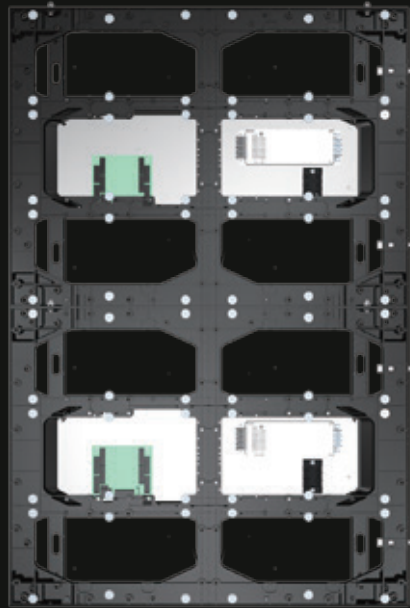
Rear Maintenance

## Installation of Back Strip

Fix the back strips onto the cabinets with M28\*8 screws,  
and then install the combined cabinets onto the wall via the screw holes on the strips.



Rear View

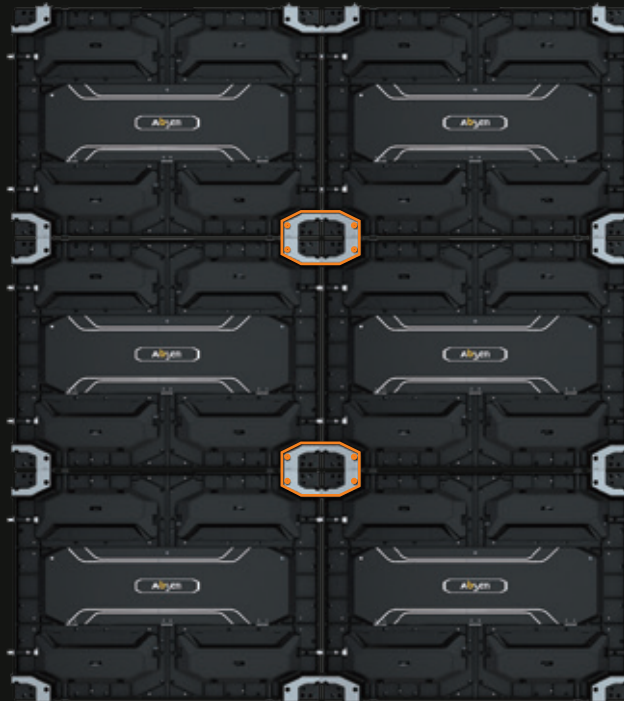


Front View





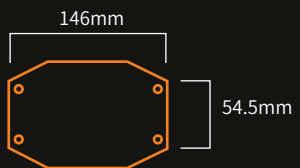
# Flexible Installation (Steel structure)



Connector install rear view



Side View



Square connector

# Process quality control

Remain the Originality ,  
Absen Identify the Development with Standard

01

## First Article Inspection

Testing items : parameter confirmation; function;  
white balance

02

## InPut Process Quality Control

Testing items: parameter confirmation;  
Quality confirmation

03

## Final Quality Control

Testing items: appearance; mechanic,  
optoelectrical and safety performance

04

## Outgoing Quality Control

Testing items: product model: shipping quality; package label;  
shipping mark; appearance

PROCESS  
QUALITY  
CONTROL

# KL Applications- Multiple Solution



Retail, Mall



Hotel



Conference Hall



Commercial Real Estate



Transportation



Multiple Store

# Parameters

	KL3	KL2.5	KL2
LED Type	SMD2121	SMD2121	SMD1515
Pixel Pitch (mm)	3	2.5	2
Panel Dimensions (WxHxD)/(mm)	640×480×60	640×480×60	640×480×60
Pixel Per Panel	208×156	256×192	320×240
Panel Weight (kg)	7.8	7.8	7.8
Panel Material	Die Casting Aluminum	Die Casting Aluminum	Die Casting Aluminum
Module Dimensions (WxH)/(mm)	320×160	320×160	320×160
Brightness (nit)	700	700	700
Refresh Rate (Hz)	1920	1920~3840	1920~3840
Gray scale (bit)	13~14	13~14	13~14
Contrast Ratio	4000:1	4000:1	4000:1
Color Temperature (K)	6500	6500	6500
Viewing Angle (H/V) (°)	160/160	160/160	160/160
Driving Type	1/26	1/32	1/40
AC Operating Voltage (V)	180~240	180~240	180~240
Power Consumption (Max./Avg.)(W/m <sup>2</sup> )	345/115	360/120	480/160
Storage Temperature ( )	40~ 60	40~ 60	40~ 60
Operating Temperature ( )	10~ 40	10~ 40	10~ 40
Storage Humidity (RH)	10 ~85	10 ~85	10 ~85
Operating Humidity (RH)	10 ~80	10 ~80	10 ~80
IP Rating (Front/Rear)	IP40/IP21	IP40/IP21	IP40/IP21
LED Lifetime (H)	100000	100000	100000
Module Maintenance	Fully front/rear		
PSU & Others Maintenance	Fully front/rear		
Panel Installation Type	ground stack / wall mount / rigging / back channel		